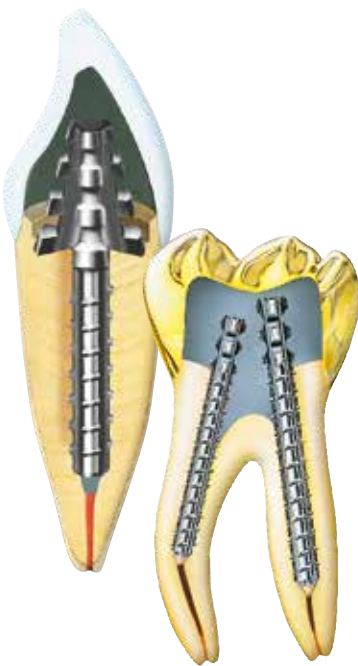




Reconstruction posts | **Vario System**



Cylindrical reconstruction posts for a wide range of applications.

Thanks to the different head designs and shank configurations, the Vario system is ideally suitable for various treatments of the crown and roots.

- **Vario** - non-protruding cylindrical head for the reconstruction of partially destroyed teeth or teeth with more than one root
- **Vario X** with pronounced retention head for deeply destroyed teeth
- **Vario X ELO** for reconstructing deeply destroyed teeth with long clinical crowns

Vario posts come in 4 different shank lengths (6, 7, 9 and 13 mm). They are available with or without thread. The active post shank with self-cutting thread serves as active anchorage of the post in the root canal, whereas the passive post shank with retention grooves and blasted surface is designed for more fragile teeth.

Thanks to its ideally matched components and the different post configurations, the Vario system allows a perfectly systematic treatment no matter what the situation is.

Made of pure titanium, Vario posts are particularly suitable for reconstructions with plastic materials such as composite.

Clinical sequence:

1. Pre-operative radiological status.

2. Pre-operative clinical status.

3. Removal of the clinical crown.

4. Preparation of the root canal with combination bur 179, creation of the inlay cavity with root facer 116D.

5. Checking the proper position of the post with checking post 151L9.



6. Canal filled with cement. The post is positioned with socket wrench 66L9.

7. Direct reconstruction of the crown core with composite (e.g. DentinBuild).

8. Prepared crown core.

9. Post-operative clinical status.

10. Post-operative radiological status.

