



# Compass | Periodontology

Product recommendations and appropriate use in the dental practice





## **Subgingival scaling and root planing with SonicLine and PiezoLine instruments**

4 -9

### **SonicLine**

Removal of subgingival concretions

Root planing

Treatment of furcations

Treatment of roots with the creation of a flap using Quick tips

10 -19

### **PiezoLine**

Compatibility and general recommendations for use

Removal of subgingival concretions

Treatment of furcations

Root planing

20

### **Rotary instruments**

Root planing

21

### **Reciprocating files**

Removal of subgingival concretions and root planing

# Sonic tips | SonicLine

## Range of application

Made by Komet in Germany, the SonicLine comprises a comprehensive range of high-quality sonic tips that cover a multitude of indications. The instruments of the SonicLine owe their effectiveness to the fact that they can perform elliptical movements in all directions. Thanks to their clear labeling, the sonic tips are easy to identify. The order number is laser etched onto the sonic tips. Tips coated with fine grit are provided with a red dot for identification.

The sonic tips can be reprocessed in a Miele washer/disinfector by means of a rinse adapter which is part of a validated procedure. Instructions on the reprocessing of sonic tips can be ordered from the manufacturer.



## Compatibility of the SonicLine tips

### Tips from Komet's SonicLine can be used in the following hand pieces:

- in the scalers of the co. W&H (Series Proxeo® ZA-55/L/LM/M/LS and Proxeo® ST ZE-55RM/BC, series Synea® ZA-55/L/LM/M or series Alegra® ST ZE-55RM/BC)
- in the SONICflex™ hand-piece of the co. KaVo (Serie 2000N/L/X/LX or Series 2003N/L/X/LX)
- in the SIROAIR L of the co. Sirona®

### The sonic tips Quick made by Komet can be used in the following hand-pieces:

- Sonic hand-piece SFQ2008L/LS made by Komet
- SONICflex™ Quick hand-piece of the co. KaVo series 2008/S/L/LSi

To select the correct tip, please refer to the list of connections on the left.

### Handy hint:

To view our complete range, please refer to our SonicLine brochure 4 10357.



## Removal of subgingival concretions using SonicLine instruments.

### SF4 and SF4L/R (SFQ4 and SFQ4L/R for Quick connections)

Apart from a long and straight periodontal tip (SF4), Komet's range of SonicLine tips comprises two sonic tips angled to the left and right, ideally suitable for the removal of concretions in deep periodontal pockets.

The minimally invasive function of the sonic tips allows gentle work, protecting the adjacent collagenous soft tissue and the root surface. In addition, the tips facilitate rinsing of periodontal pockets and improve bacterial management due to cavitation effects.



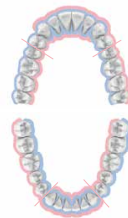
Fig. 1



Fig. 2

[Fig. 1]  
The sonic tip SF4 for removing soft plaque in deep periodontal pockets (up to a depth of 9 mm) allows gentle work, protecting the collagenous tissue and the root surface.

[Fig. 2]  
The specially angled shapes of the sonic tips SF4L/R are optimally adapted to the anatomy of the tooth.



#### Recommendations for use in the Komet SF1LM/S and in the SFQ2008L:

- Power setting ① : gentle treatments
- Power setting ② : standard treatments
- Power setting ③ : only for a short period of time



SF4L.000



SF4R.000

# Root planing with SonicLine instruments

## SF10L/R (SFQ10 L/R for Quick connections)

The sonic tip SF10 is distinguished by its clever loop-shaped design. Provided with a rounded tip with a sharp inner edge, the SF10L/R is ideally suitable for the minimally invasive, yet effective removal of soft and hard deposits and planing of the root surface. The special shape of this new sonic tip is suitable for a range of different tooth anatomies and facilitates thorough cleaning of the root surfaces. The special version SF10T has a slim, straight shape to facilitate work even in very deep gingival pockets (> 9mm) in crowded conditions.

[Fig. 1]  
The tips are also suitable for periodontal surgery with the creation of a flap.

[Fig. 2]  
Used for periodontal treatments without the creation of a flap, the minimally invasive tip prevents damage to the soft tissue.

### Recommendations for use in the Komet SF1LM/S and in the SFQ2008L:

- Power setting 1 : standard treatments
- Power setting 2 : only for a short period of time



Fig. 1



Fig. 2



SF10T.000



SF10L.000



SF10R.000

German utility patent DE20 2012 100 778  
European patent EP2 617 382

# Treatment of furcations with the SonicLine.

## SF11

The difficult access and the bizarre structures of the furcation pose a huge challenge to dentists. In response, Komet developed the new sonic tip SF11 in close



**Scientific advice:**  
Prof. Günay, Medical University,  
Hannover/Germany

cooperation with Prof. Dr. Günay of the Medical University Hannover. The ingenious shape of this tip is a revolution in mechanical work on furcations. The SF11 is particularly gentle on the soft tissue because it can also be used for

root treatments without flap. Provided with 6 blades, the working part allows effective cleaning even of hard-to-access furcations. Thanks to its unique shape, the SF11 can adapt to a multitude of geometries.



SF11.000



Fig. 1



Fig. 2

[Fig. 1]  
The tip SF11 is provided with a tothing and can therefore be used for enlarging the entrance of the furcation, thus optimizing the hygienic conditions.

[Fig. 2]  
The SF11 is suitable for use in the prevention, treatment and aftercare phase of furcation periodontitis.

**Recommended use in the Komet SF11M/LS:**

- Power setting **●** : gentle treatments



## Root planing and furcation treatments without flap with SonicLine Quick.

### SFQ24-27

The root planing tips from our SonicLine range were specially developed for work on furcations. Provided with bud-shaped working parts of identical size, the tips SFQ24L (angled to the left) and SFQ24R (angled to the right) are designed for work in hard-to-reach concavities.

The tips SFQ26 and SFQ27 are intended for cleaning and smoothing surfaces. The bud-shaped working part of the SFQ26 measures 2 mm in length and 1 mm in width, whereas that of the SFQ27 is 4 mm long and 1.5 mm thick. All root planing sonic tips are coated with diamond grit of size 25 µm.



Fig. 1



Fig. 2

[Fig. 1]

The contra-angled sonic tips SFQ24L/R permit access to the interproximal furcation entrances even in case of a closed dental arch.

[Fig. 2]

The large bud-shaped sonic tip SFQ27 in the concavity of an extracted tooth.

**Recommended use in the SFQ2008L:**

- Power setting 1 : gentle treatments
- Power setting 2 : standard treatments



SFQ24L.000



SFQ24R.000



SFQ26.000



SFQ27.000

# Ultrasonic tips - PiezoLine

## Range of application

Apart from a wide assortment of tips for prophylaxis, Komet's PiezoLine comprises a multitude of tips for periodontal treatments.

Contrary to sonic tips, the instruments of our PiezoLine ultrasonic tips owe their effective cutting power to the fact that they perform bilateral, unidirectional movements by means of piezoelectric power systems.

After treatment, the ultrasonic tips can be reprocessed with a rinsing adapter as part of a validated cleaning procedure in a Miele washer disinfector.



## Compatibility of PiezoLine tips.

<b>Tips with EM1 connection can be used in the following hand pieces:</b>
<ul style="list-style-type: none"><li>• Piezon® Master 700, Minimaster®, Minimaster® LED, MiniPiezon® of the company EMS,</li><li>• Titanus® E of the company TEKNE DENTAL</li></ul>
<b>Tips with S11 connection can be used in the following hand pieces:</b>
<ul style="list-style-type: none"><li>• PerioSonic for PerioScan and</li><li>• SIROSONIC/L and SIROSONIC TL of the company Sirona®, used in the dental treatment units TENEO and SINIUS</li></ul>
<b>Tips with KA1 connection can be used in the following hand pieces:</b>
<ul style="list-style-type: none"><li>• KaVo PIEZOlux™</li><li>• SONOSOFT/SONOSOFT LUX</li></ul>

Komet's range of ultrasonic tips is distinguished by its large choice of tips for periodontal treatments.

To select the correct tip, please refer to the list of connections on the left.

### Handy hint:

To view the full range of our PiezoLine tips, we recommend our PiezoLine brochure 411782.



## Important notes on the use of PiezoLine instruments.

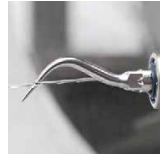


Fig. 1

### **Important recommendations for use:**

- To choose the appropriate power setting for your chosen ultrasonic tip, please refer to the instructions for use enclosed with the tips
- Before placing the ultrasonic tip against the tooth, start up the tip with plenty of spray cooling (fig. 1). To this end, all tips should be set to ensure a generous flow of cooling liquid.
- During the treatment, hold the instrument in a tangential position to the tooth.
- Always use ultrasonic tips with low contact pressure. Excessive contact pressure decreases the oscillations of the ultrasonic tip, thus reducing its efficiency.

## Removal of subgingival concretions with PiezoLine instruments.

Subgingival deposits of calculus adhering to the dental root surfaces are called concretions. Such concretions mechanically irritate the soft tissue of the periodontium and provide an ideal environment for microorganisms whose toxins (bacterial toxins) can provoke periodontitis.

The removal of calculus deposited is therefore an essential step prior to the treatment of periodontitis and to prevent it in the first place (fig. 1). When caught at an early stage, periodontitis can be healed by simply removing concretions, thus avoiding a complicated surgical intervention.



Fig. 1

### Handy hint:

We recommend to control the wear of these tips on a regular basis with the PiezoLine control cards 411698, 412830, 413586.



Removal of subgingival concretions with PiezoLine instruments.

### Ultrasonic tips EM1 – compatible with EMS units:

#### Frontal region:

The PL3 is suitable for removing periodontal debris in the region of hard-to-reach interproximal surfaces.

#### Lateral region:

The PL1 and PL2.EM1 are suitable for removing periodontal debris in the region of hard-to-reach interproximal surfaces.

[Fig. 1 and 2]

Work on hard-to-reach interproximal surfaces with the tips PL1 and PL2 EM1.



Fig. 1



Fig. 2



PL1.EM1



PL2.EM1



PL3.EM1

Removal of subgingival concretions with PiezoLine instruments.



Fig. 1



Fig. 2

### Ultrasonic tips SI1 – compatible with Sirona® units:

#### Front region:

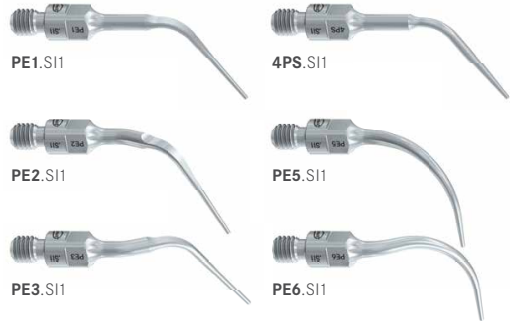
The PE1.SI1 (60°) and the 4PS.SI1 (90°) are ideally suited for rinsing gingival pockets and for cleaning dental roots in deep gingival pockets.

#### Lateral region:

The PE2.SI1 and the PE3.SI1 are intended for periodontal debridement in deeper gingival pockets in the lateral region. These ultrasonic tips are provided with an angle of 60°.

The tips PE5.SI1+PE6.SI1 serve to clean roots in deep gingival pockets in the lateral region. These ultrasonic tips are provided with an angle of 90°.

[Fig. 1 and 2]  
Subgingival treatment in all quadrants with the periodontal tips PE 1-6. PE1-6.



## Removal of subgingival concretions with PiezoLine instruments.

### Ultrasonic tips KA1 – compatible with KaVo PIEZOlux™ units:

#### Front region

The ultrasonic tip LU63.KA1 is suitable for removing subgingival concretions up to a depth of up to 9 mm, especially in the anterior region and on smooth surfaces.

[Fig. 1]

The tip LU63 during the removal of subgingival concretions in the front region.

[Fig. 2]

Thanks to its fine shape, the LU64 can also be used in the interdental region.

#### Lateral region:

Curved to the left or to the right, the tips LU64 and LU65 were developed for cleaning subgingival pockets with a depth of up to 9 mm.



Fig. 1



Fig. 2



LU63.KA1



LU64.KA1



LU65.KA1



## Treatment of furcations with PiezoLine instruments.

### PL4/PL5.EM1:

The cleaning of hard-to-reach furcations requires high-grade, effective instruments. To this end, Komet offers the following ultrasonic tips that are ideally suitable for work on furcations:

PiezoLine ultrasonic tips EM1 – compatible with EMS units: The tips PL4 and PL5.EM1 are intended for the debridement of furcations and concavities. Their round shape allows the minimally invasive cleaning of furcation roofs even in cases of poor visibility. The tips are available curved to the left or curved to the right to suit all tooth geometries.



Fig. 1



Fig. 2

[Fig. 1]

The ultrasonic tips PL4 and PL5 were developed for the thorough cleaning for furcation roofs. Thanks to their round shape, they are capable of effectively removing even hard-to-reach concretions in the furcation roof [Fig. 2].



PL4.EM1



PL5.EM1

## Root planing with PiezoLine instruments.

Any residual particles of calculus and remaining rough patches are leveled out during the so-called root planing (fig. 1). The goal of this treatment step is to create as smooth a root surface as possible because this will reduce the retentive properties of the surface, thus preventing the deposit of new mineral sediments and a biofilm and the toxins produced by it.

However, deep gingival pockets and the anatomical properties of the root can hamper access to the root surface, irrespective of the treatment method used. What's more, the scaling and root planing steps during surgical periodontitis treatments cannot be carried out without direct vision.

The success of the treatment depends less on the chosen method than on the careful, systematic approach with which the surface of each tooth is treated. Komet offers a range of high-end ultrasonic instruments for this purpose.



Fig. 1

## Root planing with PiezoLine instruments.

### Ultrasonic tips EM1 – compatible with EMS units:

Coated with medium diamond grit, the HPL3.EM1 not only facilitates thorough cleaning of the root under direct vision but also the smoothing of restoration overhangs and extension of furcation roofs.

The fine-grit instrument DPL3.EM1 is suitable for polishing dental surfaces after cleaning.

Range of application:

1. Smoothing of restoration overhangs.
2. Re-contouring of crowded furcations to facilitate dental hygiene.
3. Thorough cleaning of the root under direct vision.
4. Subsequent polishing of the root for a perfectly smooth surface.



Fig. 1

[Fig. 1]  
The ultrasonic tips HPL3 and DPL3 are suitable for periodontal treatments that include the creation of a flap.



DPL3.EM1



HPL3.EM1

# Rotary instruments

## Root planing

Apart from a multitude of sonic and ultrasonic tips, Komet also offers a selection of rotary instruments for root planing (fig. 1). The user can choose from a range of practice-tested shapes:

### Steel instruments:

189/190

The root planers 189 and 190 are made of high-grade stainless surgical steel. They are therefore suitable for both mechanical and manual reprocessing.

### Diamond instruments:

831/8832/832LEF



Fig. 1



### Handy hint:

We recommend our set 4362 for root treatments with rotary instruments.

# Reciprocating files

## Subgingival scaling and root planing



Fig. 1

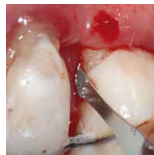


Fig. 2

### Files for use in the reciprocating contra-angle

Intended for use in the reciprocating contra-angle, these diamond coated periodontal files are perfectly suitable for work in crevice-shaped defects with predictable results. Thanks to the continuous supply of rinsing liquids, the user works under clearly improved vision. The flexible instrument neck automatically adapts to the surface – for a perfectly clean result.

### Indication:

- Periodontal treatments without flap
- Periodontal treatments with flap
- Perfect removal of debridement

### Product properties for perfect work:

- Coated on both sides with fine diamond grit and therefore usable on both sides
- No risk of injury to the intralesional granulation tissue
- Blade width of merely 0.4 mm – optimally suited for the periodontal gap

- Particularly fine instrument neck – the instrument is elastic and flexible and remains in contact to the root surface at all times

[Fig. 1 and 2]  
RCAP3 during root planing under unobstructed vision.



**RCAP1.000**  
Smoother | L 5 mm



**RCAP2.000**  
Surfer | L 2,5 mm



**RCAP3.000**  
Beaver | L 4,5 mm

Patents:  
DE 10 2009 011 011 584\*  
EP 2 403 425\*  
\*pending

Komet Dental

Gebr. Brasseler GmbH & Co. KG  
Trophagener Weg 25 · 32657 Lemgo  
Postfach 160 · 32631 Lemgo · Germany

Verkauf Deutschland:

Telefon +49 (0) 5261 701-700  
Telefax +49 (0) 5261 701-289  
info@kometdental.de  
www.kometdental.de

Export:

Telefon +49 (0) 5261 701-0  
Telefax +49 (0) 5261 701-329  
export@kometdental.de  
www.kometdental.de

Komet Austria Handelsagentur GmbH  
Hellbrunner Straße 15  
5020 Salzburg · Austria

Telefon +43 (0) 662 829-434  
Telefax +43 (0) 662 829-435  
info@kometdental.at  
www.kometdental.at