

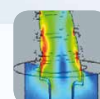


Minimally invasive, perfectly esthetic. **DentinPost X Coated** and **TitanPost X Coated**.



ER System

Short root posts with coating and retention head



Quality Products
Made in Germany

Brasseler®, Komet®, CeraBur®, CeraCut®, CeraDrill®, CeraFusion®, CeraPost®, CompoClip®, CompoStrip®, DC1®, DCTherm®, FastFile®, F360®, F6 SkyTaper®, H4MC®, MicroPlant®, OptiPost®, PolyBur®, TissueMaster®, TMC® and TissueMaster Concept® are registered trademarks of Gebr. Brasseler GmbH & Co. KG.

Some of the products and designations mentioned in the text are trademarked, patented or copyrighted. The absence of a special reference or the sign ® should not be interpreted as the absence of legal protection.

This publication is copyrighted. All rights, also with regard to translation, reprint and reproduction (also in the form of extracts) are reserved. No part of this publication may be reproduced or reprocessed using electronic systems in any form or by any means (photocopying, microfilm or other methods) without the written permission of the editor.

Colours and products are subject to alterations. Printing errors excepted.

As at December 2016

Perfecting the tried and trusted – with two new posts for the ER system.

- Short anchoring depth for minimum weakening of the root
- Pronounced retention head for severely damaged crowns
- Excellent retention and perfect esthetics thanks to complete coating
- Clever selection of instruments to ensure a fast, yet precise preparation of the recipient site
- Fixation of posts and core build-up using the adhesive technique





A tribute to the root canal.

DentinPost X Coated and **TitanPost X Coated**. Glass fiber has always been a highly aesthetic material, but now, aesthetic restorations can also be created with titanium posts – another welcome addition to the successful ER system.



Aesthetic restoration even of severely damaged teeth

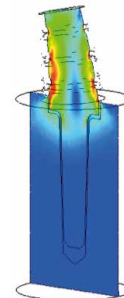
The DentinPost X Coated is made of glass fiber. Its pronounced retention head facilitates an aesthetic restoration even of teeth with a severely damaged crown. Thanks to its tooth-colored coating, the TitanPost X Coated with retention head is the first titanium root post that perfectly combines outstanding stability with exceptional esthetics.



Minimum weakening of the root

The shank length of the DentinPost X Coated and the TitanPost X Coated is merely 6 mm. Thanks to their short size, these root posts are less invasive than any other post before. Their short anchoring depth ensures that the root is hardly weakened at all.

A finite element analysis confirmed that appreciable tensions/forces do not occur in the apical part of short root posts.



Source:
Internal FEM analysis on tensions/forces in the root canal, September 2015



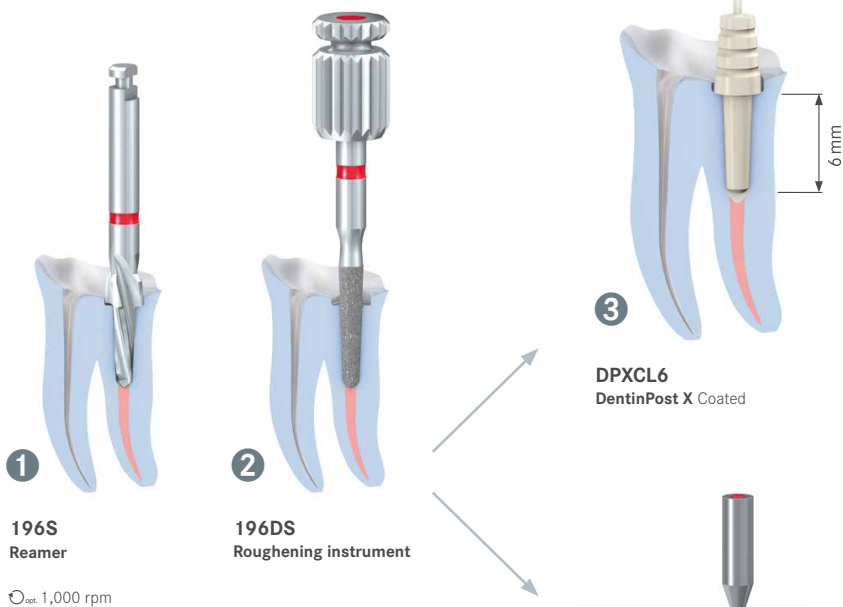
Excellent retention

To achieve a perfect retention between the post and the adhesive fixing material, the DentinPost X Coated and the TitanPost X Coated are completely coated with layers of silicate and silane and provided with an adhesion enhancing polymer layer.



Quick and easy application

The DentinPost X Coated is available in the sizes 070, 090 and 110, whereas the TitanPost X Coated comes in the sizes 070 and 090. A selection of matching instruments facilitates a particularly effective and comfortable preparation of the recipient site of the post. The newly developed reamer 196S can prepare the retention box and the post site at the same time, thus allowing a whole work step to be omitted.



[01] After the removal of the root filling (e.g. with the pilot drill 183LB), the reamer 196S prepares the retention box and the recipient site of the post in just one step – to exactly 6 mm to ensure a perfect fit.

[02] Roughening of the root canal by manually rotating the 196DS without pressure twice or three times in the root canal – again, to a perfect fit of 6 mm.

[03] Insertion of the completely coated DPXCL6 or TPXCL6 with the convenient handling element. Once the post has been inserted, the uncoated handling element is simply snapped off. The post material is chosen to suit the indication:

DentinPost X Coated

- For partially or completely destroyed teeth
- Ideally suited for restoring single teeth

TitanPost X Coated

- For deeply destroyed teeth
- Ideally suited for complex restorations, for example bridge abutments



Posts and instruments.

ER DentinPost X Coated



● DPXCL6.000.070



● DPXCL6.000.090



● DPXCL6.000.110

ER Reamers



● 196S.204.070



● 196S.204.090



● 196S.204.110

ER Reamers with a longer shank



● 196SL.204.070



● 196SL.204.090



● 196SL.204.110

ER Roughening instruments



● 196DS.644.070



● 196DS.644.090



● 196DS.644.110

ER TitanPost X Coated



● TPXCL6.000.070



● TPXCL6.000.090



DentinPost X Coated
Set 4650 | Set 4651 | Set 4661



TitanPost X Coated
Set 4657 | Set 4658

Komet Dental

Gebr. Brasseler GmbH & Co. KG

Trophagener Weg 25 · 32657 Lemgo

Postfach 160 · 32631 Lemgo · Germany

Verkauf Deutschland:

Telefon +49 (0) 5261 701-700

Telefax +49 (0) 5261 701-289

info@kometdental.de

www.kometdental.de

Export:

Telefon +49 (0) 5261 701-0

Telefax +49 (0) 5261 701-329

export@kometdental.de

www.kometdental.de

Komet Austria Handelsagentur GmbH

Hellbrunner Straße 15

5020 Salzburg · Austria

Telefon +43 (0) 662 829-434

Telefax +43 (0) 662 829-435

info@kometdental.at

www.kometdental.at