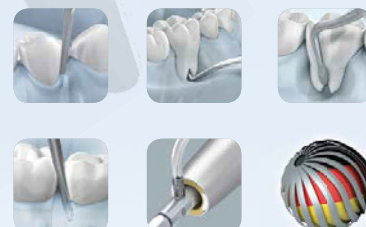




# Quality – The Quick way. **SonicLine Quick.**

SonicLine Quick  
Sonic tips in original  
Komet quality

Micro/Bevel **new**



Quality Products  
Made in Germany





MULTIflex™ and SONICflex™ are trademarks of the company KaVo.

Brasseler®, Komet®, CeraBur®, CeraCut®, CeraDrill®, CeraFusion®, CeraPost®, DC1®, DCTherm®, FastFile®, F360®, F6 SkyTaper®, H4MC®, OptiPost®, PolyBur®, PrepMarker®, TissueMaster®, TMC® and TissueMaster Concept® are registered trademarks of Gebr. Brasseler GmbH & Co. KG.

Some of the products and designations mentioned in the text are trademarked, patented or copyrighted. The absence of a special reference or the sign ® should not be interpreted as the absence of legal protection.

This publication is copyrighted. All rights, also with regard to translation, reprint and reproduction (also in the form of extracts) are reserved. No part of this publication may be reproduced or reprocessed using electronic systems in any form or by any means (photocopying, microfilm or other methods) without the written permission of the editor.

Colours and products are subject to alterations. Printing errors excepted.

As at February 2017



# Index

---

4   5	<b>SonicLine Quick</b>
	<b>Prophylaxis</b>
6   7	Scaling
8	Implant prophylaxis
	<b>Periodontology</b>
9	Removal of concretions
10   11	Root planing without flap
12   13	Root planing with flap/furcation
	<b>Conservative dentistry</b>
14   15	Interproximal cavity preparation
16   17	Micro/Bevel <b>new</b>
18   19	Stripping/Shaping
	<b>Prosthetic dentistry</b>
20   21	Crown preparation
	<b>Oral surgery</b>
22   23	Surgery
24   25	Surgical crown extension
26	<b>Sonic hand piece</b>
27   28	<b>Accessories</b>



# SonicLine Quick with the time-saving Quick connection.

---



Comfort with a twist of your wrist:  
The new **QuickClick**.

As the leading manufacturer of dental instruments worldwide, we can offer you a vast range of products. Come and discover our SonicLine, the extensive line of sonic tips made by Komet.

We are proud to present our new range of sonic tips with Quick connect, suitable for prophylaxis, periodontology, implant prophylaxis, preparation of crowns, interproximal cavities, work on fillings, orthodontics and oral surgery. On the next few pages, we would like to give you detailed information on the vast scope of applications.

\* When using the tips for surgical indications, make sure to use a sonic hand piece that has been authorized for surgery. These include the Komet SFQ2008L/LS and the SONICflex hand piece (series 2008/S/L/LS) provided by KaVo.





Made in Germany, the SonicLineQuick comprises a comprehensive range of high-quality sonic tips that cover a multitude of indications. The instruments owe their effective cutting power to the fact that they can perform elliptical movements in all directions. Thanks to their clear labelling, the sonic tips are easy to identify. The order number is laser etched onto each tip. Tips coated with fine grain are provided with a red dot for identification. The sonic tips can be reprocessed in a Miele washer/disinfector by means of a rinse adapter which is part of a validated procedure. Instructions on the reprocessing of sonic tips can be ordered from the manufacturer.

Apart from an ample choice of sonic tips, Komet's SonicLine also comprises a sonic hand-piece suitable for every authorized sonic tip – the air scaler SFQ2008L/LS. This scaler is distinguished by its amazing versatility and impressive performance. For further information on the SFQ2008L/LS, please turn to page 26 of this brochure.



**Important note:**

The sonic tips made by Komet are not only authorized for use in the Komet sonic hand piece SFQ2008L/LS, but also in the sonic hand piece SONICflex™ series 2008/S/L/LS made by KaVo.



**Manufacturer's Information**  
on the reprocessing of sonic tips  
(410381)





# Scaler

## Tips for removing dental calculus | SFQ1-3

### Indication:

- Supra and subgingival removal of calculus during prophylactic treatments (up to a depth of 2 mm). [1/2]

### Advantages:

- Mechanical work is much less tiring than work with manual instruments
- The elliptical movements in all directions performed by the sonic hand piece make circular work as easy as child's play

### Recommendations for use in the Komet SFQ2008L/LS:

- Start up sonic tip prior to application to the tooth, providing plenty of spray cooling.
- Power setting **1** : gentle treatments
- Power setting **2** : standard treatments
- Power setting **3** : only for a short period of time



SFQ1.000



SFQ2.000



SFQ3.000

### Hint:

For implant prophylaxis, we recommend our sonic tip SF 1982 (see page 8).



# Scaler

## Tips for removing dental calculus | SFQ8

A reliable tip for dental hygienists. The SFQ8 can be used for removing concretions in the supragingival and in the subgingival region. It constitutes an ideal connection between the removal of calculus and periodontal scaling during professional cleaning.

### Indication:

- Supra and subgingival removal of calculus (up to a depth of 4 mm)

### Advantages:

- Gentle, yet precise removal of concretions
- Improved cooling
- Suitable for work in pockets with a depth of up to 4 mm [1]

### Recommendations for use in the Komet SFQ2008L/LS:

- Start up sonic tip prior to application to the tooth, providing plenty of spray cooling
- Power setting **1** : gentle treatments
- Power setting **2** : standard treatments
- Power setting **3** : only for a short period of time



SFQ8.000

# Implant prophylaxis

## Removal of concrements from implant necks | SF1982

### Indications:

- Polymer pins for non-abrasive removal of subgingival concrements and soft deposits from smooth implant necks
- Plaque removal
- Removal of new deposits of calculus

### Advantages:

- No abrasion
- No roughening of smooth neck areas
- Easy to handle screw connection between the holder and the Polymer pin
- The pin is disposable, whereas the holder can be reused, reprocessed and re-sterilized.

### Recommendations for use in the Komet SFQ2008L/LS:

- Power setting ① : gentle treatments
- Power setting ② : standard treatments







# Periodontal treatments

## Removal of concretions | SFQ4

### Indication:

- Removal of soft plaque in deep periodontal pockets (up to a depth of 9 mm) [1]

### Advantages:

- The minimally invasive function of the sonic tips allows gentle work, protecting the adjacent collagenous soft tissue and the root surface
- Improved bacterial management [2]

### Recommendations for use in the Komet SFQ2008L/LS:

- Start up sonic tip prior to application to the tooth, providing plenty of spray cooling
- Power setting ① : gentle treatments
- Power setting ② : standard treatments
- Power setting ③ : only for a short period of time



SFQ4L.000 SFQ4R.000



### Hint:

We recommend checking the degree of wear of these tips on a regular basis, with the help of the control card (417443).

# Periodontal treatments

## Cleaning of roots without flap | SFQ10L/R

Our sonic tips SFQ10L/R were developed in close cooperation with Prof. Günay of the Medical University Hanover. Distinguished by its clever loop-shaped design, the SFQ10L/R is ideally suitable for the minimally invasive, yet effective removal of soft and hard deposits and planing of the root surface. Its rounded tip greatly reduces the risk of injury to the patient and the dentist. The special shape of this new sonic tip is suitable for a range of different tooth anatomies and facilitates thorough cleaning of the root surfaces.

### Indication:

- Minimally invasive, particularly effective removal of soft and hard deposits and planing of the root surface whilst reducing the risk of injury to the patient.



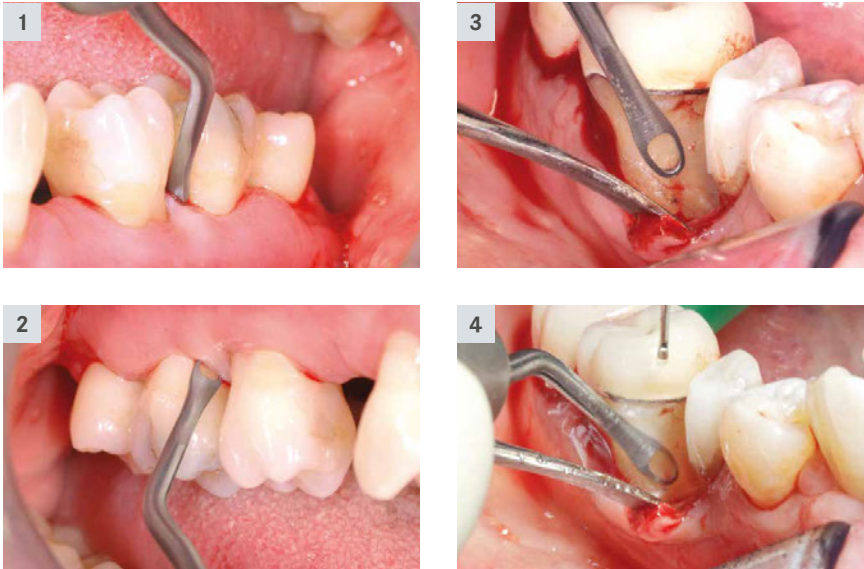
SFQ10L.000



SFQ10R.000



**Scientific advice:**  
Prof. Günay, Medical University  
Hanover/Germany

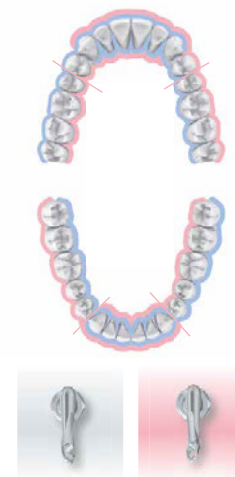
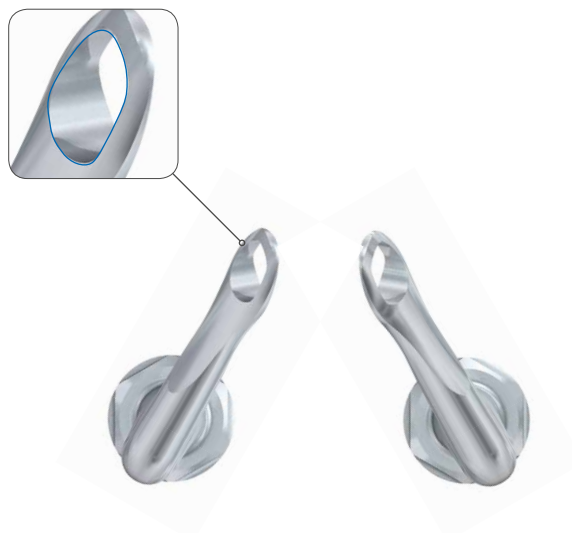


#### Advantages:

- Gentle, yet effective, with a sharp inner and outer edge of the loop-shaped working part (see image)
- Prevents damage to the soft tissue
- Suitable for treatments with or without the creation of a flap [1-4]

#### Recommendations for use in the Komet SFQ2008L/LS:

- Power setting ① : gentle treatments
- Power setting ② : standard treatment
- Power setting ③ : only for a short period of time



SFQ10L.000 SFQ10R.000



# Periodontal treatments

## Root cleaning with flap/furcation | SFQ24L-27

The root planing sonic tips from Komet's SonicLine were specially developed for treating furcations. Provided with bud-shaped working parts of identical size, the tips SFQ24L (angled to the left) and SFQ24R (angled to the right) are designed for work in hard-to-reach concavities [1]. The tips SFQ26 and SFQ27 are suited for cleaning and smoothing surfaces. The working part of the SFQ26 measures 2 mm in length and 1 mm in width, whereas the working part of the SFQ27 is 4 mm long and 1.5 mm wide [2/3]. All root planing surfaces are coated with diamond grit of size 25 µm.

### Indications:

- Cleaning of hard-to-reach furcations (SFQ24L-R)
- Smoothing and cleaning of surfaces and concavities





#### Advantages:

- Interproximal access to the furcation, even in case of a closed dental arch
- Effective cleaning of surfaces thanks to fine diamond coating

#### Recommendations for use in the Komet SFQ2008L/LS:

- Start up sonic tip prior to application to the tooth, providing plenty of spray cooling
- Power setting ① : gentle treatments
- Power setting ② : standard treatments



SFQ24L.000 SFQ24R.000

Ideally suited for  
CAD/CAM technology

# Interproximal cavity preparation

## For perfect restoration margins

In close cooperation with Dr. M. Oliver Ahlers, Hamburg, Komet has developed sonic tips for the preparation of interproximal cavities. It was our goal to create new sonic tips to facilitate the final shaping of cavities and the smoothing of the interproximal cavity margins. The result: 4 diamond coated sonic tips bisected lengthways (mesial/distal) that are ideally suited for work on molars and premolars. These tips were developed in line with the preparation guidelines for ceramic restorations, with a view to reducing the technical requirements and facilitating the shaping of the interproximal boxes. Thanks to their rounded angles in the transition area between the axial and the shoulder region,

these sonic tips are capable of preparing the cavities to a perfectly chamfered shape, thus creating ideal conditions for taking a precise impression of the preparation, with either conventional impression material or by means of radiographic techniques. The new sonic tips create perfect conditions for the subsequent work in the dental laboratory. The clear and concise shape of the sonic tips greatly facilitates the creation of precise restorations.

For the preparation of the basic cavity prior to receiving ceramic inlays or partial crowns, we recommend our expert set 4562ST.



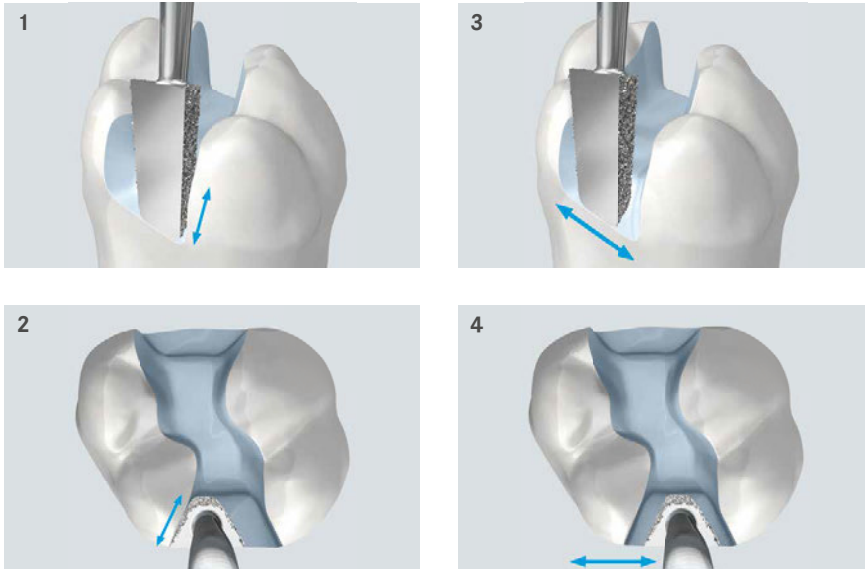
### 4 arguments in favor of Komet tips:

- ❶ Optimized diamond coating (60 µm instead of 40 µm) to enable shaping and finishing
- ❷ The shape of the tips is adapted to today's ceramic inlays (instead of the previously used ceramic inserts). This guarantees plane lateral surfaces and transitions rounded in all directions
- ❸ Greater axial depth for improved shaping of the buccal and lingual surfaces of the interproximal box as well as the floor of the box.
- ❹ The tip is available in 2 sizes each for molars and premolars

**Hint:**  
We recommend our compass for all-ceramic restorations:



**4562ST**  
Expert set in a sterilizable stainless steel bur block



#### Indications:

- Final shaping and finishing of inter-proximal cavities and smoothing of interproximal cavity margins in molars and premolars [1–4]. The following restorations can be used subsequently:
- Direct fillings made of tooth-colored composites
- Inlays/partial crowns made of pressed ceramics or CAD/CAM milled ceramics

#### Advantages:

- Rounded shapes for the preparation prior to receiving ceramic inlays and composite fillings
- 2 different sizes for work on small and large lateral defects
- The ideal interproximal cavity angle prevents unsupported enamel prisms and creates restoration margins that can be clearly read and scanned

#### Recommendations for use in the Komet SFQ2008L/LS:

- Start up sonic tip prior to application to the tooth, providing plenty of spray cooling.
- Power setting ① : finishing
- Power setting ③ : shaping

#### For premolars:



#### For molars:



#### Handy hint:

Designed for the gentle and precise positioning of inlays and partial crowns, the CEM tip SF12 ideally complements these sonic tips.



Video "Preparation rules for ceramic inlays and partial crowns"



Webinar | "Preparation techniques and fixation of all-ceramic restorations"  
Univ.-Prof. Dr. Roland Frankenberger

# Micro/Bevel **new**

## Sonic tips for micropreparation

In conservative dentistry, top priority is given to the preservation of natural hard tooth substance. The basic concept of minimally invasive dentistry has, therefore, inevitably resulted in new demands on the design of instruments. In addition to our rotary instruments for micropreparation (Sets 4337 and 4384) with specially slender necks and small working parts, Komet now offers a range of sonic tips for the minimally invasive treatment of incipient caries. Treatment of caries with conventional instruments poses a risk of eliminating too much tooth substance, particularly in the interproximal region where damage to the sound substance of adjacent teeth often cannot be prevented.

This is where the micro tips come into play. Their small, delicate working parts were specially designed for the preparation of tiny and hard-to-reach lesions. The user can choose between a small (size 016) and big (size 024) hemisphere. The tips are suitable for both occlusal and lateral access to the cavity.

The Bevel tips are intended for beveling the margins with precision to an angle of 45°.

Available in mesial and distal versions, all tips are coated on one side only to prevent damage to the adjacent tooth. For a precise minimally invasive treatment of tiny defects, we recommend using magnifying glasses or microscopes.



### Hint:

We recommend our compass for filling therapy:







**Indications**

- Defect orientated preparation of micro lesions without damaging the adjacent teeth with SFQ30D/M (available with a small [1] or big [2] hemisphere)
- Beveling of cavity margins with SFQ58D/M [3]

**Advantages:**

- Coated on one side only to prevent damage to the adjacent teeth
- Thanks to the oscillating movements and minimally invasive preparation, these tips are very popular in children’s dentistry
- Precise beveling of the cavity margins to optimize the quality of the restoration [3]

**Recommendations for use in the Komet SFQ2008L/LS:**

- Start up sonic tip prior to application to the tooth, providing plenty of spray cooling
- Power setting ① : gentle treatments

**Micro tips:**



**SFQ30M.000.016**  
mesial



**SFQ30D.000.016**  
distal



**SFQ30M.000.024**  
mesial



**SFQ30D.000.024**  
distal

**Bevel tips:**



**SFQ58M.000.027**  
mesial



**SFQ58D.000.027**  
distal



**Set 4337.314**  
for micropreparation as suggested by Dr. Stefan Neumeyer\*

\* also available with FG short shank 313



**Set 4383**  
for minimally restorative preparation as suggested by Dr. Stefan Neumeyer

# Stripping | Shaping



## Thin sonic tips for interproximal surfaces

In close collaboration with Dr. Ivo Agabiti, we developed very thin sonic tips covered in fine grain which are designed for trimming interproximal surfaces.

### Indications:

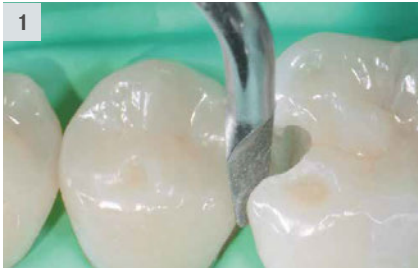
- Separation prior to the preparation of crown cores
- Smoothing of sharp transitions at the interproximal preparation limit as part of the preparation of cavities [1/2]
- Anatomical shaping of the interproximal surfaces of composite fillings [3/4]
- Interproximal enamel reductions (IER) as part of orthodontic treatments [5/6]

### Advantages:

- The tips are covered on one side only (“M” for mesial and “D” for distal surfaces). Like this, the neighbouring teeth remain untouched.
- Choice of flat (for stripping) and convex tips (for shaping)



**Scientific advice:**  
Dr. Ivo Agabiti, Pesaro/Italy



**Stripping**  
coating on flat side



**Shaping**  
coating on convex side



**Recommendations for use in the Komet SFQ2008L/LS:**

- Start up sonic tip prior to application to the tooth, providing plenty of spray cooling
- Power setting 1 : gentle treatments



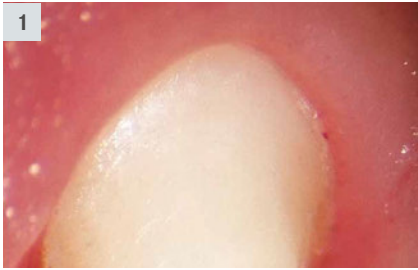
Video "Crown preparation"  
Dr. Agabiti



Video "Cavity preparation"  
Dr. Agabiti



Video "Interproximal enamel reduction"  
Dr. Agabiti



# Preparation of crowns

## The perfect complement to rotary instruments

According to Dr. Domenico Massironi, the “best synergy effects are created by a combination of rotary and sonic instruments”. We have implemented Dr. Massironi’s concept by jointly developing special sonic tips for the preparation of crowns.



SFQ979.000.012



SFQ979.000.014



SFQ979.000.016



SFQ862.000.014



SFQ847KR.000.016



● SFQ8979.000.014

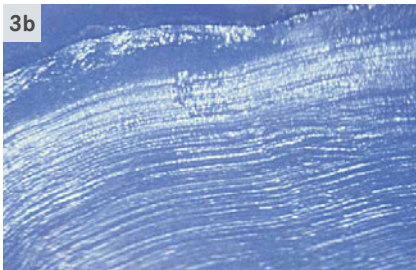


● SFQ8979.000.016



**Scientific advice:**  
Dr. Domenico Massironi, Milano/Italy





#### Indication:

- Exact positioning and finishing of the prosthetic margin [4 a/b] after supragingival preparation with rotary instruments of identical shape [3 a/b]

#### Advantages:

- The tips are gentle on the soft tissue, thus avoiding haemorrhages that might hamper impression taking
- The retraction cord is not pulled out
- The tips create very fine crown margins, which is an essential condition for well-fitting, durable restorations [1/2]
- Improved adhesion of the fixing cement thanks to the irregular structure of the crown core

#### Recommendations for use in the Komet SFQ2008L/LS:

- First prepare tooth with rotary instruments of congruent shape
- Start up sonic tip prior to application to the tooth, providing plenty of spray cooling
- Power setting **1** : Finishing
- Power setting **2** : Positioning of the crown margin



Video "Crown preparation"  
Dr. Massironi



# Surgery



## Extremely fine bone cuts

Sonic tips for oral surgery, developed by Dr. Ivo Agabiti

### Indications:

- Conservative work on bones as part of surgical and implantological interventions.
- Bone cuts [1 a/b] [2 a/b]
- Splitting of the alveolar crest (Splitting) [1 a/b]
- Detaching a tooth from its alveolar compartment during extraction [2 a/b] [3 a/b]



**SFSQ100.000**  
sagittal



**SFSQ101.000**  
axial

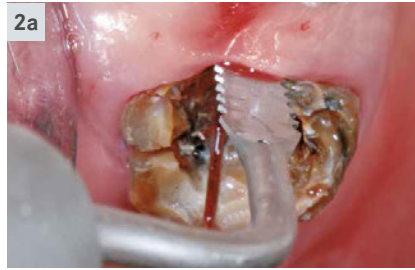
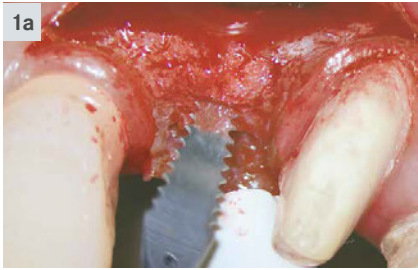


**SFSQ102.000**  
straight

**Note:**  
Cutting width just 0,25 mm  
Cutting depth 10,70 mm



**Scientific advice:**  
Dr. Ivo Agabiti, Pesaro/Italy



#### Advantages:

- Very fine incisions (0,25 mm)
- Gentle on the soft tissue
- Easy handling
- Excellent vision
- Optimum control during operations

#### Recommendations for use in the Komet SFQ2008L/LS:

- Power setting ① : gentle treatments
- Power setting ② : standard treatments
- External supply of a sterile cooling agent by means of the cooling adapter SFQ1979 (the water supply of the dental power unit must be turned off).



Video <sup>®</sup>  
Dr. Ivo Agabiti



#### 9952

Sterilization box for up to 7 sonic tips  
(without instruments)  
Can be sterilized at up to 135°C



# Surgical crown extension



## SFSQ120 - 122

Sonic tips for minimally invasive surgical crown extension without the creation of a flap, developed by Dr. Schwenk and Dr. Striegel, Nuremberg



SFSQ120.000.020



SFSQ120.000.030



SFSQ121.000.020



SFSQ121.000.030



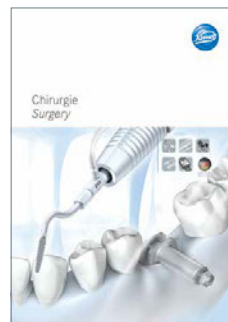
SFSQ122.000.020



SFSQ122.000.030

### Indications:

- Minimally invasive surgical crown extension without creation of a flap, achieved by gently swivelling the sonic tip in mesial and distal direction in order to reconstitute the biological width in the following cases:
- Asymmetrical dental arcade [1]
- Gummy Smile [2]
- Violation of the biological width [3]



**Hint:**  
We recommend our  
brochure:

**Chirurgie  
Surgery**  
CE © 410102





#### Advantages:

- Surgical crown extension without creation of a flap
- Reconstitution of the biological width without need for periodontal surgery [4]
- Thanks to their shape which resembles a flattened sphere, these tips are ideally suited for effective reduction of the bone
- Diamond coated on the outer surface only
- Excellent healing of the wound, almost trauma-free treatment
- Minimally invasive technique

#### Recommendations for use in the Komet SFQ2008L/LS:

- Power setting ① : gentle treatments
- Power setting ② : standard treatments



**Scientific advice:**  
Dr. Thomas Schwenk  
Dr. Marcus Striegel



Video  
Dr. Thomas Schwenk  
Dr. Marcus Striegel

# Sonic hand piece



## SFQ2008L/LS

### Sonic hand piece by Komet

The air driven sonic hand piece (air scaler) SFQ2008L/LS is extremely effective, yet very gentle. It is distinguished by its elliptical movements of 360°. What's more, the SFQ2008L/LS has the following advantages:

- Fits all MULTIflex™ connections (SFQ2008L) and Sirona® connections (SFQ2008LS)
- Optimum illumination of the operative site thanks to two focused light beams
- Infinitely variable (3 settings)
  - Power setting ❶ = gentle treatments
  - Power setting ❷ = standard treatments
  - Power setting ❸ = short-term use only\*
- Oscillating frequency of 6 kHz
- With spray cooling
- 2 years' manufacturer warranty

### Important note:

Apply low contact pressure only; excessive contact pressure reduces the vibration of the sonic tip and consequently its effectiveness.



Indikation/Indication	SFQ2008L	Leistungsstufe Power Level		
		❶	❷	❸
Scaler		❶	❷	❸
Implantatprophylaxe/Implant prophylaxis		❶	❷	❸
Paro/Perio		❶	❷	❸
Wurzelglättung/Root Planer		❶	❷	❸
Kronenstumpfpräparation/Crown Prep		❶	❷	❸
Kavitätenpräparation/Cavity Prep, Inlay		❶	❷	❸
Micro/Bevel		❶	❷	❸
Stripping/Shaping		❶	❷	❸
Chirurgie*/Surgery*		❶	❷	❸

\*SFSQ100/101/102 auch in Stufe ❸ erlaubt.      ● erlaubt/permitted  
 \*SFSQ100/101/102 also permitted in level ❸.      ● nur kurzfristig erlaubt/permitted for a short time only  
 ● nicht erlaubt/not permitted

© 09/2016 - 417443V2 - www.kometdental.de

\* This level is not authorised for all sonic tips.  
For further information, please refer to the instructions for use of the tips.



# Accessories



**SFQ1978L**  
Rinse adapter for preparing the sonic tips in Miele washer/disinfectors



**SFQ1977L**  
Rinse adapter for preparing the cooling adapter SFQ1979 in Miele washer/disinfectors



**Set 4659**  
Cooling adapter SFQ1979 for the external supply of a sterile cooling agent, with mounting wrench 566



**Important note:**

External supply of a sterile cooling agent by means of the cooling adapter SFQ1979 (the water supply of the dental power unit must be turned off).



# Accessories

---



**9952**  
Sterilization container for  
7 sonic tips (without instruments)



**9993L6**  
Sterilization container for 3 sonic tips and  
6 FG and RA instruments



**9953**  
Silicone plugs for 9952/9993L6



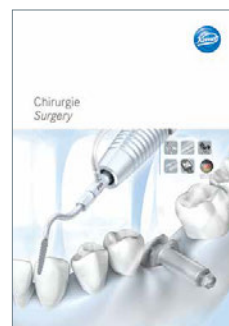
**SF4887**  
Torque wrench for sonic and  
ultrasonic tips



**Hint:**  
We recommend our brochures:



**Manufacturer's information**  
**Sonic tips**  
® 410381



**Chirurgie**  
**Surgery**  
® 410102



**Occlusal onlay**  
® 418600



**Kompass**  
**All-ceramic restorations**  
® 412124



**Kompass**  
**Periodontology**  
® 417238



**Kompass**  
**Filling therapy**  
® 417124





Komet Dental

Gebr. Brasseler GmbH & Co. KG

Trophagener Weg 25 · 32657 Lemgo

Postfach 160 · 32631 Lemgo · Germany

Verkauf Deutschland:

Telefon +49 (0) 5261 701-700

Telefax +49 (0) 5261 701-289

info@kometdental.de

www.kometdental.de

Export:

Telefon +49 (0) 5261 701-0

Telefax +49 (0) 5261 701-329

export@kometdental.de

www.kometdental.de

Komet Austria Handelsagentur GmbH

Hellbrunner Straße 15

5020 Salzburg · Austria

Telefon +43 (0) 662 829-434

Telefax +43 (0) 662 829-435

info@kometdental.at

www.kometdental.at